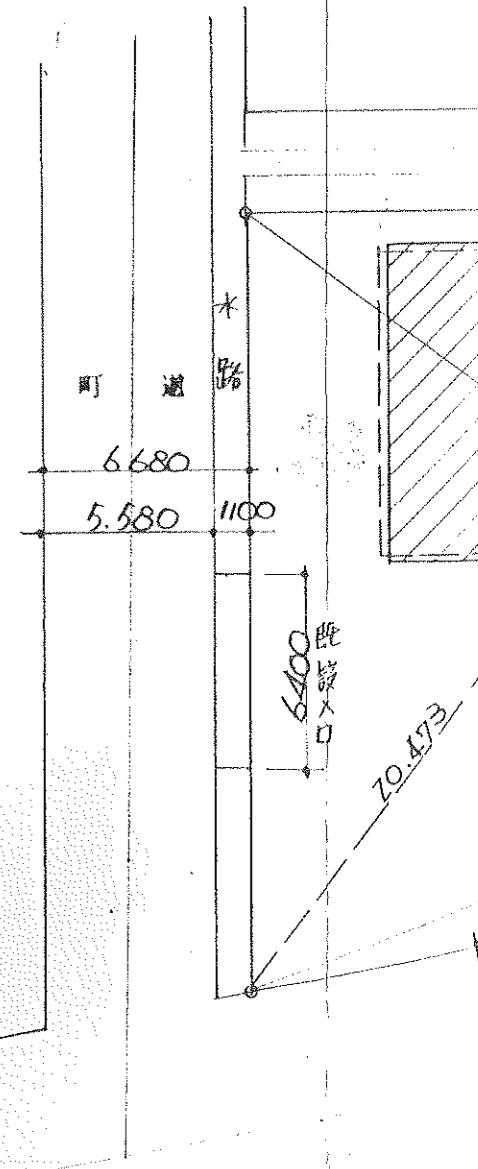
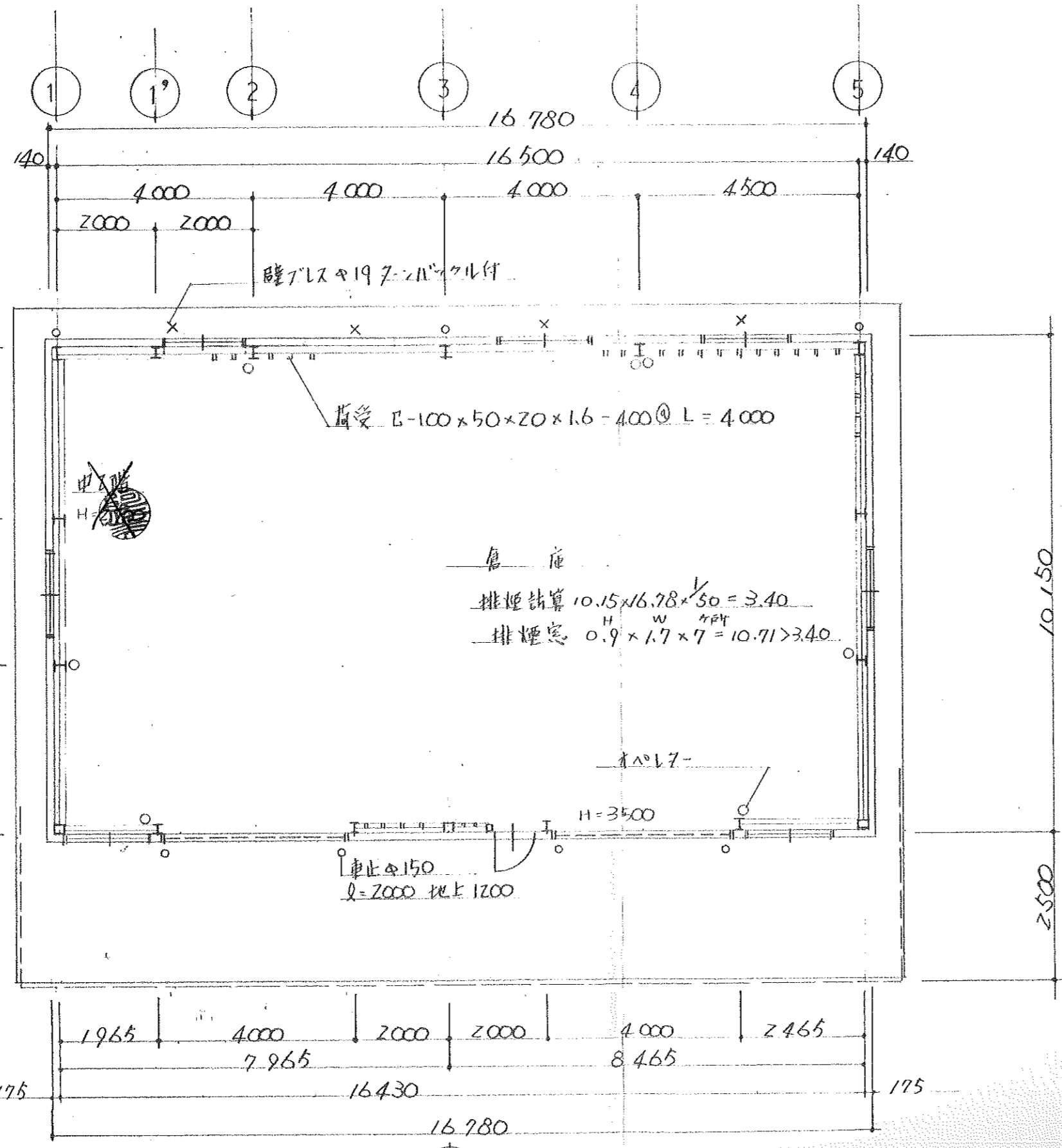
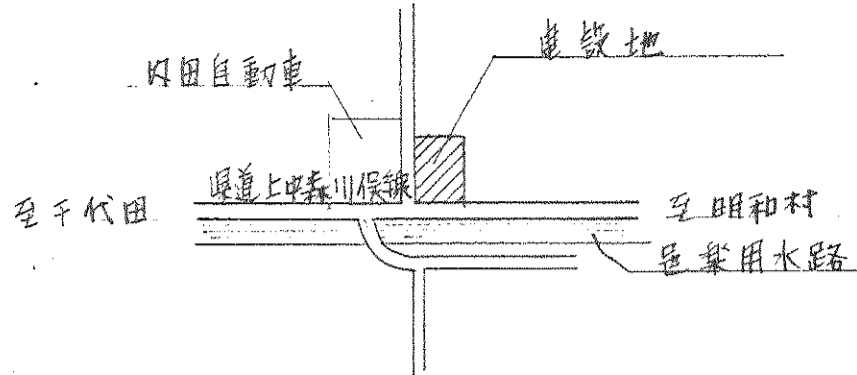
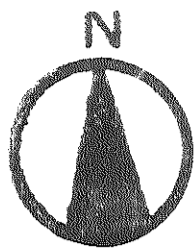
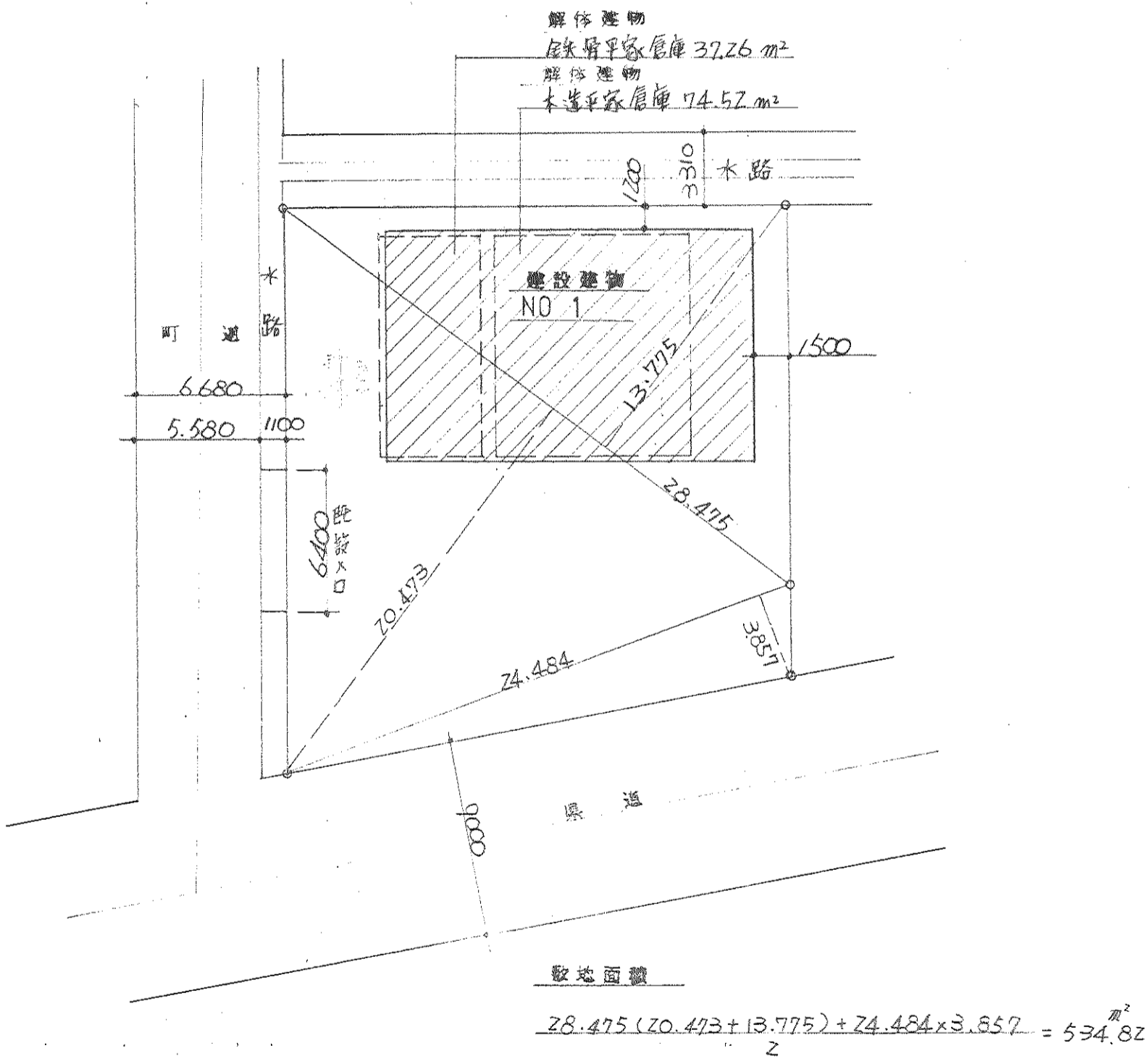


町田住
至代田





案内図

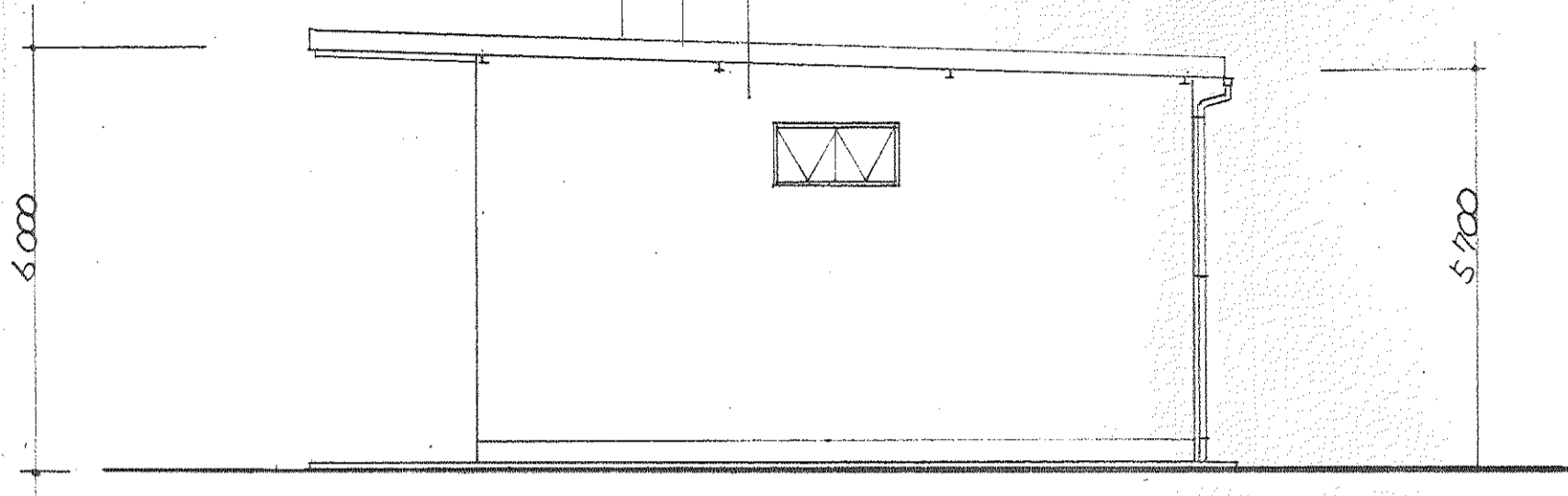


敷地面積

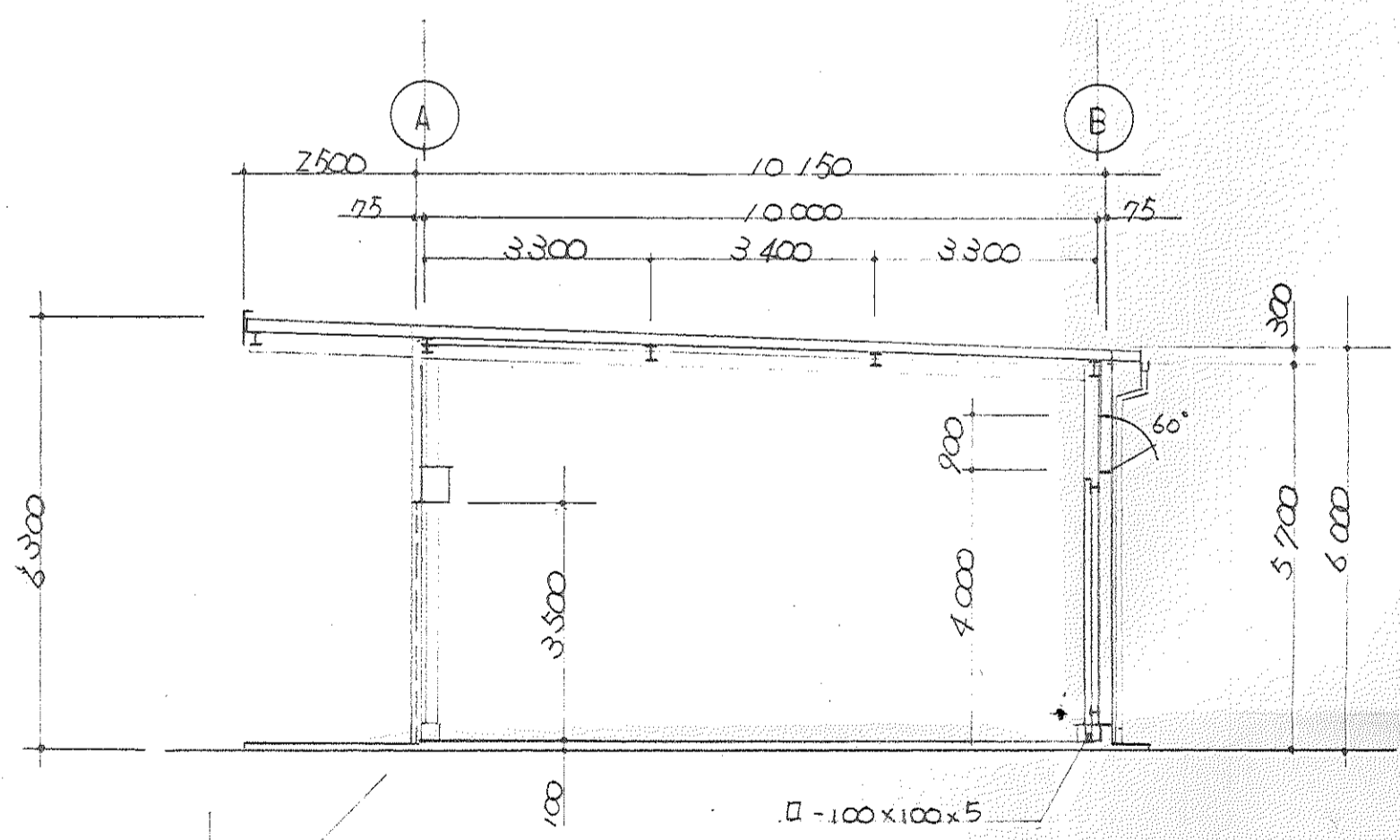
$$\frac{28.475(20.473 + 13.775) + 24.484 \times 3.857}{2} = 534.82 \text{ m}^2$$

配置図 1:250

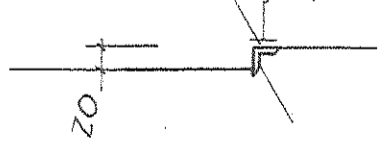
屋根 0.6 プルーフ-鋼板 H=150 丸ハセ
 幕板 H=300
 外板 防水サッシ 7張



東立面図 1:100



L-40x40x5
 D10-L=500 300^③



断面図 1:100

工事項	工事名称	図面名	縮尺	設計年月
	杉田様倉庫	東南立面図	1:100	97.8